

monasi

monasi

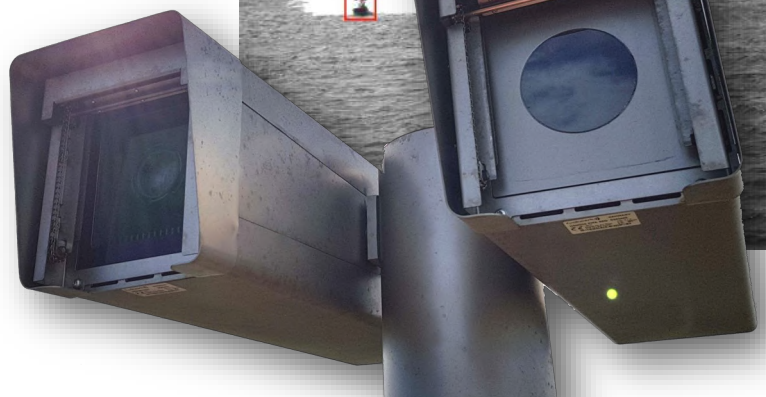
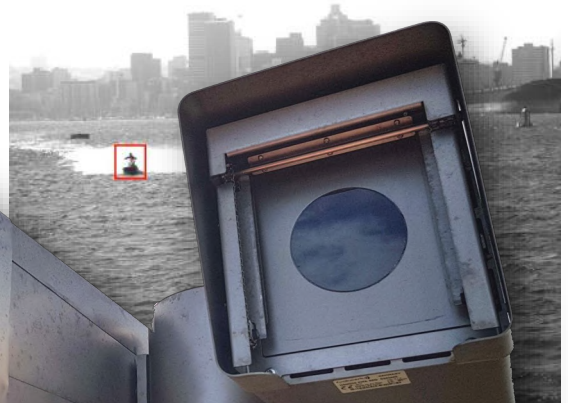
Close-In Surveillance System

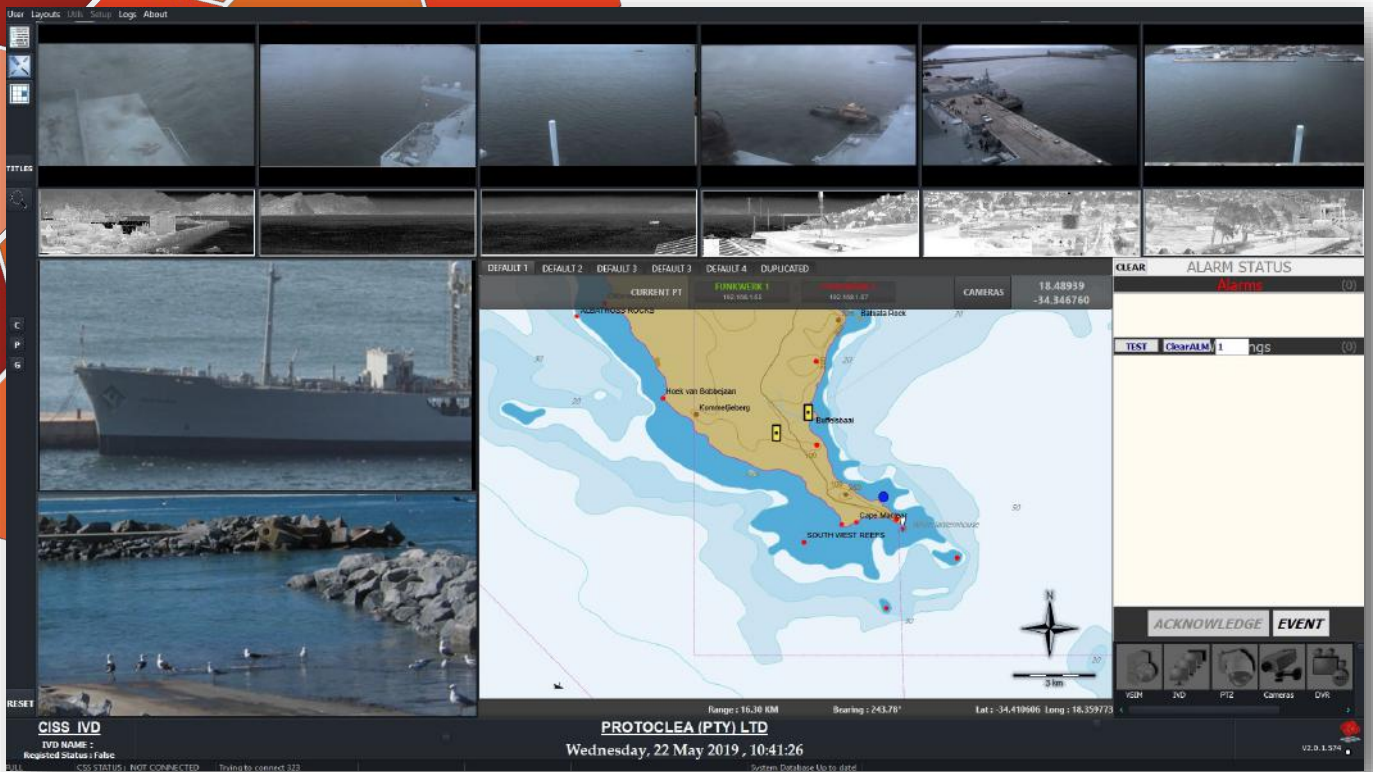
Monasi is a close-in surveillance system designed to detect asymmetrical threats. It combines daylight and thermal imaging to provide the operator with a full spectrum, all-around vision of a vessel. It can be used in both military and commercial applications, and allows for a variety of sensors.

Ideally suited for asymmetrical threats/piracy threats and harbour protection

Features include:

- 360 degree view
- Thermal and high resolution daylight cameras with low-light capability
- Detection range of 0m to 4km
- Automated detection
- Built-in video recording
- Target tracking
- Image stabilisation
- Integrated GIS map display
- Rapid designation of spotting camera
- Direct designation of effectors (e.g. guns, non-lethal)
- Vessel identification and record management
- Customisable screen layout
- Camera health and status monitoring
- Navigation system integration





Above: **Monasi** software with daylight cameras at the top, thermal below it, two high resolution PT cameras, a GIS map display and alarm log

Detected targets are plotted on a map, and an alarm is raised. Track analysis assists with threat evaluation for proper response.

Typical applications include:

- Naval vessels
- Open water and harbour protection
- Commercial vessels
- Private yachts
- Vessel protection in harbours



For more information contact:

Protoclea

Tel: +27 11 100 0935

Sales-desk@protoclea.com

www.protoclea.com