



protocolclea

advanced image engineering

oxylus

oxylus

Wide area thermal scanning system

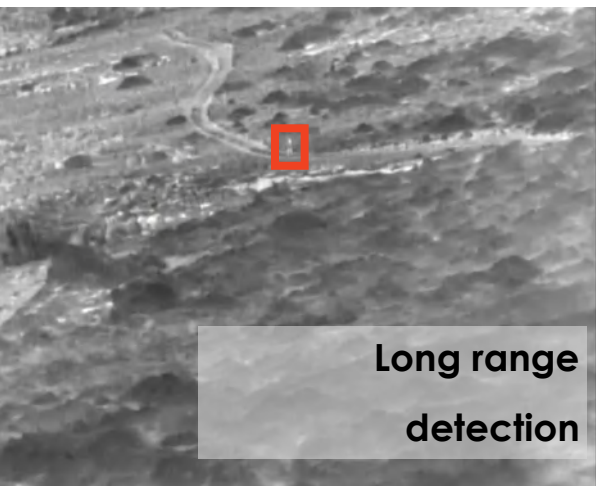
Oxylus is a wide area thermal scanning system, designed to monitor large areas of land during the day and night. It is primarily designed for proactive warning, allowing for an early response to handle the threat. It uses a high resolution thermal camera with a supporting high resolution visible spectrum camera to provide a panoramic view of the terrain.



Designed for African environments



Warm and cold temperatures



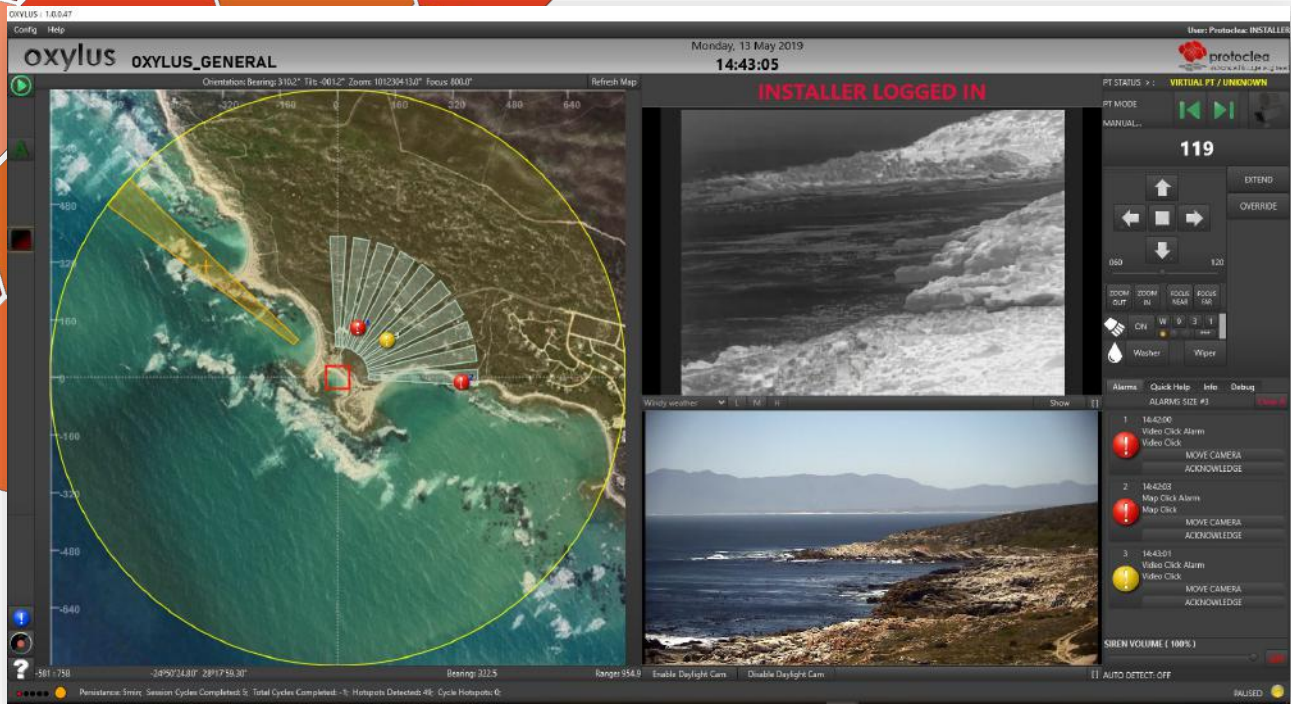
Long range detection

Features include:

- 360° surveillance
- 24/7 operation
- Up to 1.5km radius human detection
- 10X optical zoom
- Automated operation
- Target GPS positions
- Configurable auto-detection algorithms, including adjustments for wind, heat and sensitivity.
- Configurable alarm output
- Configurable scan pattern
- Low maintenance requirements
- Cost effective coverage
- Optional spotlight
- Washer/Wiper



www.protocolclea.com



Above: Oxyplus software showing scan pattern, thermal view, daylight camera view and alarms

Detected targets are plotted on a map, and an alarm is raised. If the alarm is not responded to, it is escalated to an audible alarm and SMS notification.

Typical applications include:

- Border surveillance
- Anti-poaching
- Mining
- Airport security
- Industrial farms and processing plants
- Residential and eco estates
- Farming communities
- National Key Points
- Safe City

For more information contact:

Protoclea

Tel: +27 11 100 0935

Sales-desk@protoclea.com

www.protoclea.com

